

Characteristics / Ordering Code

Pilot operated pressure reducing valves series ZDR are designed for maximum flow rates.

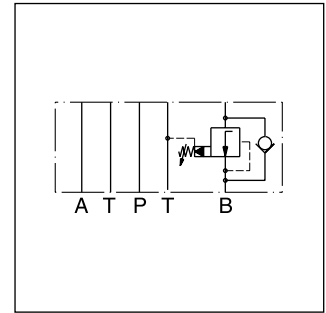
The reducing function can be located in the ports P, A or B. The sizes NG06 and NG10 are equipped with an integral return flow check valve (reducing function in A or B).

Features

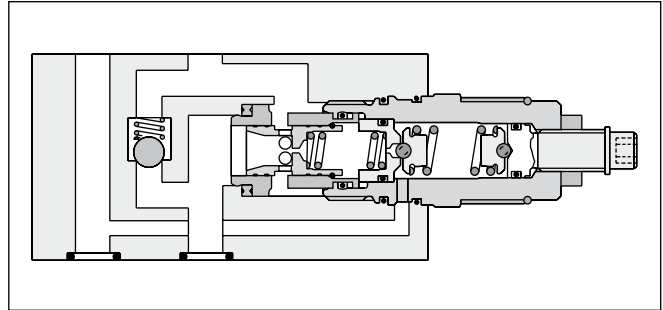
- High flow capacity
- Pressure function in P, A or B
- With integral return flow check valve
- Sizes:
ZDR01 - NG06 (CETOP 03)
ZDR02 - NG10 (CETOP 05)



ZDR-P01



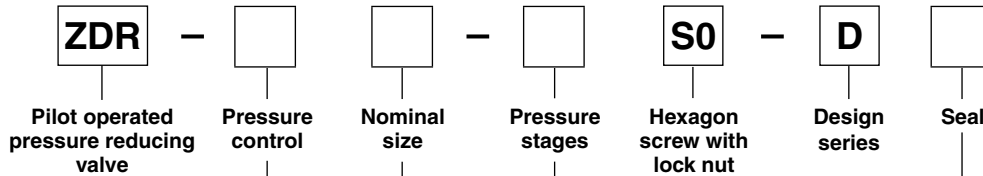
ZDR-B02



ZDR-B02

7

Ordering code



Code	Size	Pressure control
P	NG06/10	Pressure reducing in P with pressure gauge port M
AR	NG06/10	Pressure reducing in A with check valve
BR	NG06/10	Pressure reducing in B with check valve

Code	Seal
1	NBR
5	FPM

Code	Pressure stages
1	up to 70 bar
5 ¹⁾	up to 350 bar

Code	Nominal size
01	NG06
02	NG10

Ordering code details see end of chapter.

¹⁾ Code AR, BR and size 10 up to 315 bar.



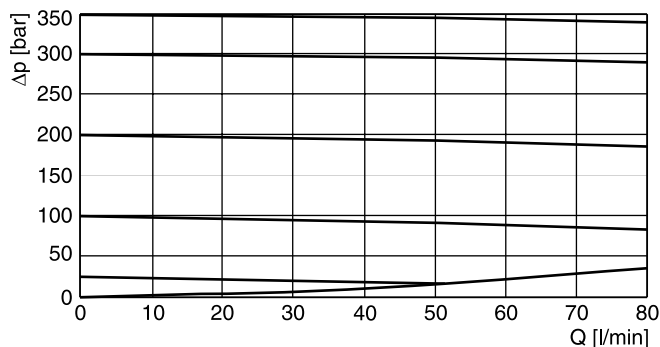
Technical Data / Characteristic Curves

Technical data

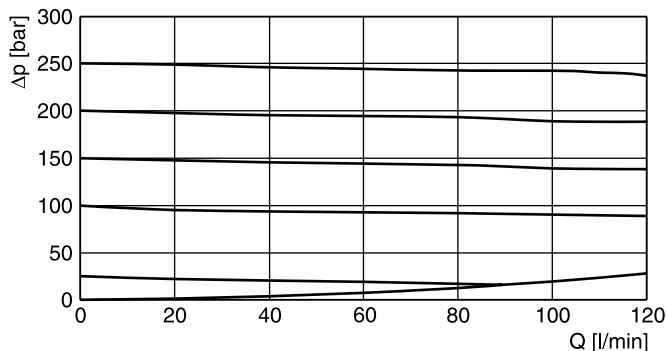
General			
Size		NG06	NG10
Mounting interface		DIN 24340 A6 ISO 4401 NFFPA D03	DIN 24340 A10 ISO 4401 NFFPA D05
		CETOP RP 121	
Mounting position		unrestricted	
Ambient temperature	[°C]	-20...+60	
MTTF _D value	[years]	150	
Weight	ZDR-P [kg]	1.6	2.9
	ZDR-AR / BR [kg]	1.8	3.0
Hydraulic			
Max. operating pressure	[bar]	350 (ZDR-AR / BR 315)	315
Nominal flow	[l/min]	80	120
Pilot oil	[l/min]	0.3	0.3
Fluid		Hydraulic oil according to DIN 51524	
Fluid temperature	[°C]	-20...+70 (NBR: -25...+70)	
Viscosity	permitted [cSt] / [mm ² /s]	20 ... 400	
	recommended [cSt] / [mm ² /s]	30 ... 80	
Filtration		ISO 4406 (1999); 18/16/13	

p/Q performance curves

ZDR-P/AR/BR01

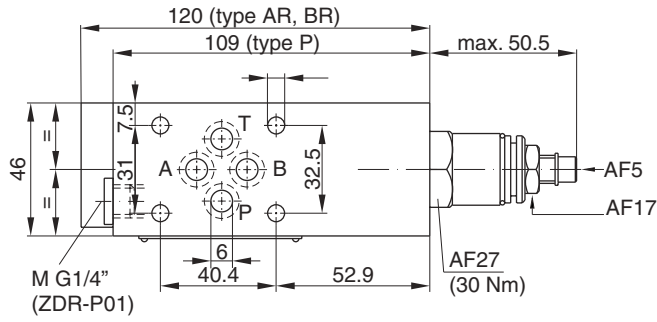


ZDR-P/AR/BR02

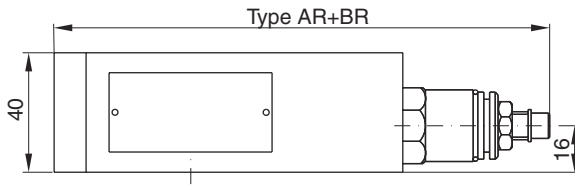
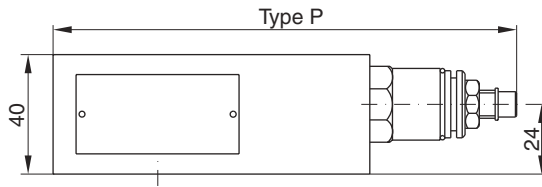


All characteristic curves measured with HLP46 at 50°C.

ZDR01

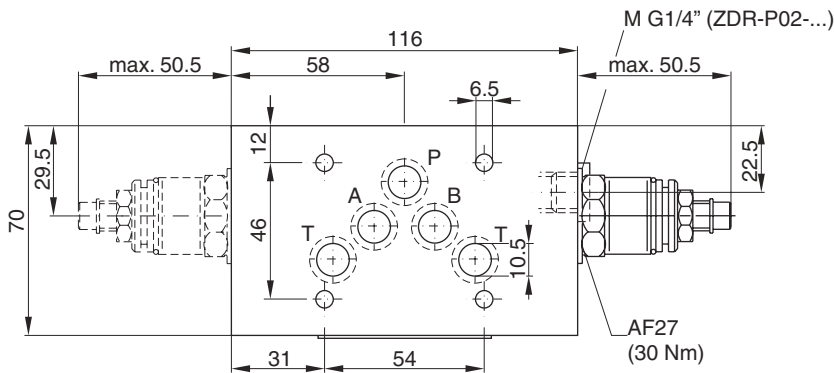


Seal kit	
Seal	Order code
1	098-91184-0
5	098-91185-0
Complete cartridge	
Pressure stage	Order code
1	098-91102-0
5	098-91103-0

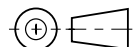
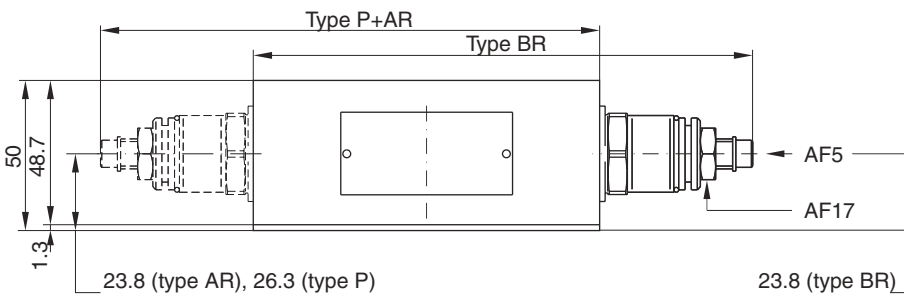


7

ZDR02

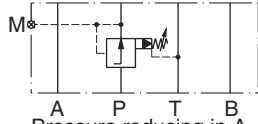


Seal kit	
Seal	Order code
1	098-91082-0
5	098-91083-0
Complete cartridge	
Pressure stage	Order code
1	098-91102-0
5	098-91103-0



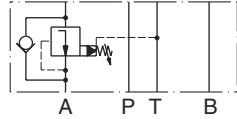
ZDR01

Pressure reducing in P
 with pressure gauge port M



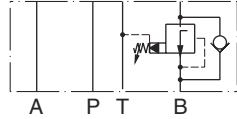
Series	Order No.
ZDR-P01-1-S0-D1	098-91179-0
ZDR-P01-5-S0-D1	098-91211-0

Pressure reducing in A
 with check valve



Series	Order No.
ZDR-AR01-1-S0-D1	098-91212-0
ZDR-AR01-5-S0-D1	098-91213-0

Pressure reducing in B
 with check valve

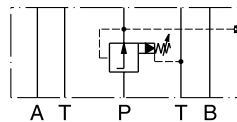


Series	Order No.
ZDR-BR01-1-S0-D1	098-91214-0
ZDR-BR01-5-S0-D1	098-91215-0

1 = 7 ... 70 bar
 5 = 7 ... 315 bar

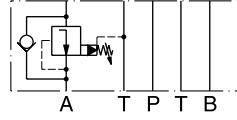
ZDR02

Pressure reducing at P
 (with pressure gauge port M)



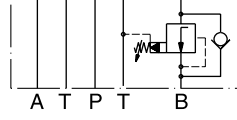
Series	Order No.
ZDR-P02-1-S0-D1	098-91050-0
ZDR-P02-5-S0-D1	098-91051-0

Pressure reducing at A
 (with check valve)



Series	Order No.
ZDR-AR02-1-S0-D1	098-91052-0
ZDR-AR02-5-S0-D1	098-91053-0

Pressure reducing at B
 (with check valve)



Series	Order No.
ZDR-BR02-1-S0-D1	098-91054-0
ZDR-BR02-5-S0-D1	098-91055-0

