

**Characteristics / Ordering Code**

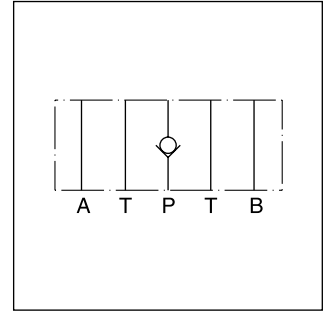
Direct operated check valves series ZRV have a cartridge type insert to provide zero leakage and high life time. The check function can be located in the P- or in the T-port.

**Features**

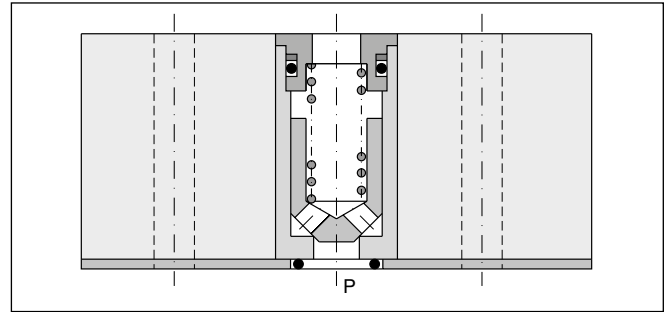
- Leakage-free seat
- High life time
- Opening pressure 0.5 bar
- ZRV01 - NG06 (CETOP 03)
- ZRV02 - NG10 (CETOP 05)



ZRV-P02

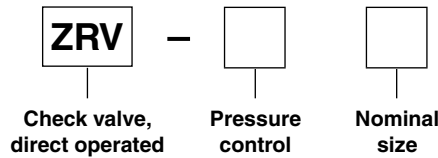


ZRV-P02



ZRV-P02

**Ordering code**



Code	Pressure control
P	Blocked in P
T	Blocked in T

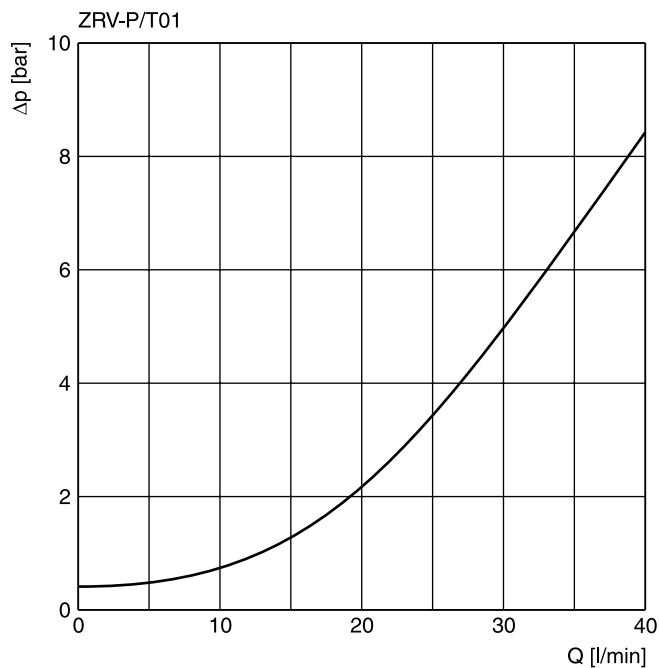
Code	Nominal size
01	NG06
02	NG10

Ordering code details see end of chapter.

**Technical data**

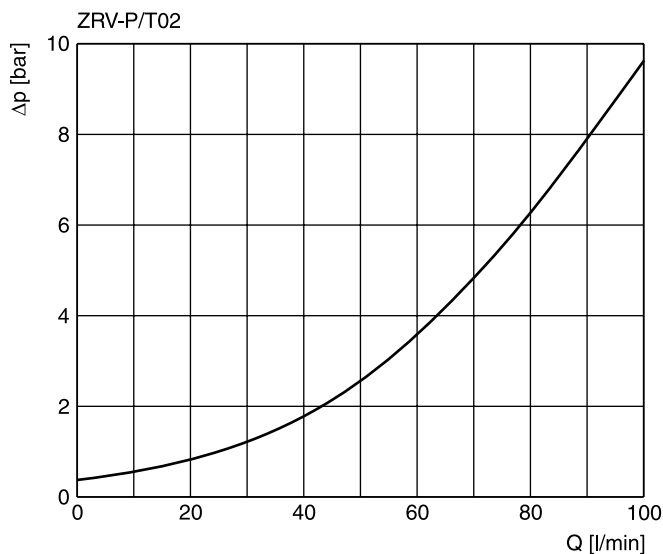
General			
Size		<b>NG06</b>	<b>NG10</b>
Mounting interface		DIN 24340 A6 ISO 4401 NFFPA D03	DIN 24340 A10 ISO 4401 NFFPA D05
		CETOP RP 121	
Mounting position		unrestricted	
Ambient temperature	[°C]	-20...+60	
MTTF <sub>D</sub> value	[years]	150	
Weight	[kg]	0.7	2.0
Hydraulic			
Max. operating pressure	[bar]	350	315
Nominal flow	[l/min]	40	100
Opening pressure	[bar]	0.5	0.5
Fluid		Hydraulic oil according to DIN 51524	
Fluid temperature	[°C]	-20...+70 (NBR: -25...+70)	
Viscosity	permitted	[cSt] / [mm <sup>2</sup> /s]	20 ... 400
	recommended	[cSt] / [mm <sup>2</sup> /s]	30 ... 80
Filtration		ISO 4406 (1999); 18/16/13	

**p/Q performance curves  
ZRV\*01**



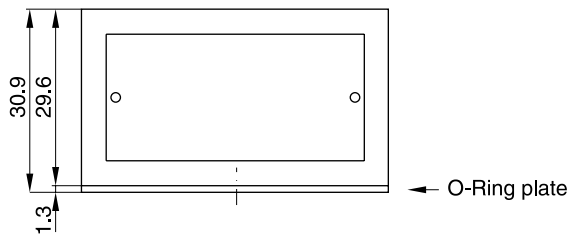
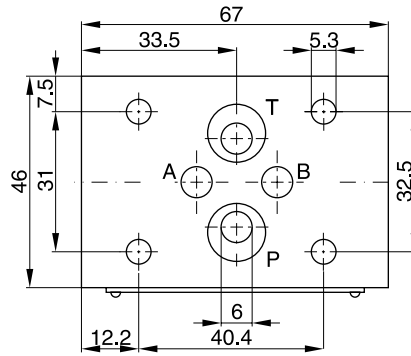
7

**ZRV\*02**



All characteristic curves measured with HLP46 at 50 °C.

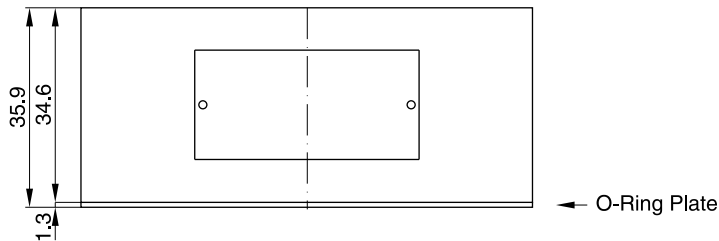
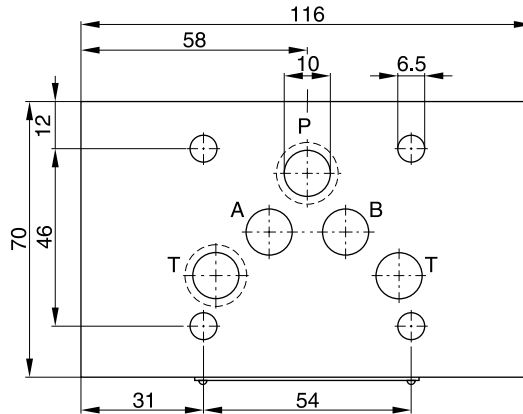
**ZRV01**



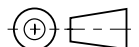
Seal kit	
Seal	Order code
NBR	SK-CM2-10
FPM	SK-CM2-V-10

7

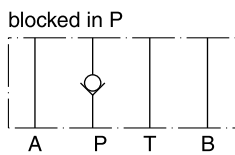
**ZRV02**



Seal kit	
Seal	Order code
NBR	SK-CM3-10
FPM	SK-CM3-V-50

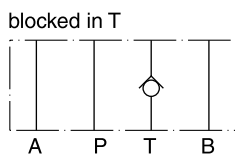


**ZRV01**



Series  
ZRV-P01

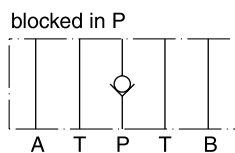
Order No.  
098-90025-0



Series  
ZRV-T01

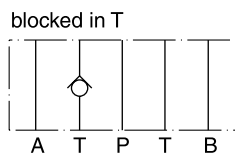
Order No.  
098-90026-0

**ZRV02**



Series  
ZRV-P02

Order No.  
098-90043-0



Series  
ZRV-T02

Order No.  
098-90044-0

7